

# CAR PARK & PASS CONTROL SOLUTIONS

PLATE  
RECOGNITION  
SYSTEM



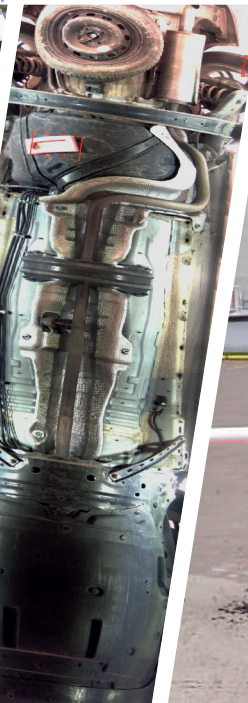
TICKET  
PARKING  
SYSTEM



AUTOMATIC  
PAYMENT  
SYSTEM



PARKING  
GUIDANCE  
SYSTEM



UNDER-VEHICLE  
SCANNING  
SYSTEM



AUTOMATIC  
ACCESS  
SYSTEM





# Take a closer look at White Rose

White Rose, is one of the Turkey's leading manufacturers of automatic doors and security systems and carries out manufacturing and design operations in its factory based in Karaman. Its factory was established in Karaman in 2006 and has 10000m2 closed production area. All mechanical and electronic components of the products, which are designed in the R & D center, are manufactured in-house.

## Services

White Rose provides its customers with the necessary technical support at every stage from product selection to installation and usage with its expert staff.

## Quality

White Rose always aims to provide the highest quality products and services to its customers. The concept of quality, which begins with product design, is maintained in the raw material supply and production processes. This understanding is approved by national and international certificates.





# TOP LEVEL COMFORT PROUDLY PRESENTED



page 4

LICENSE NUMBER  
RECOGNITION SYSTEMS



page 6

TICKETED PARKING  
SYSTEMS



page 8

UTOMATIC  
PAYMENT STATION



page 10

PARKING GUIDING  
SYSTEMS



page 12

UNDER VEHICLE  
SURVEILLANCE SYSTEM



page 14

AUTOMATIC  
PASSING SYSTEMS



page 16

GSM MODULE



page 18-19

SMART BARRIER &  
PRESTO BARRIER

# PLATE RECOGNITION SYSTEM



The White Rose Plate Recognition System (PRS) is an access control system designed to allow passage of users without the need for any additional accessories.

The license plate of the user, who is to be authorized to pass is registered with the PTS control software. The system allows the authorized user to pass by reading the license plates of the vehicles approaching the crossing point through the camera system.

Since the camera image is used for access control, no external trigger such as loop or photocell is needed. In addition, there is no need to attach any apparatus to the user's vehicle.

Camera Resolution	5MP
Reading Success	98%
Built-in Night Vision	Yes
Max Reading Distance	10mt
Loop-free Operation	Yes
External Night-vision support	Yes
Trait Signaling Support	Yes
Communication	Ethernet
Supported Country License Numbers	78



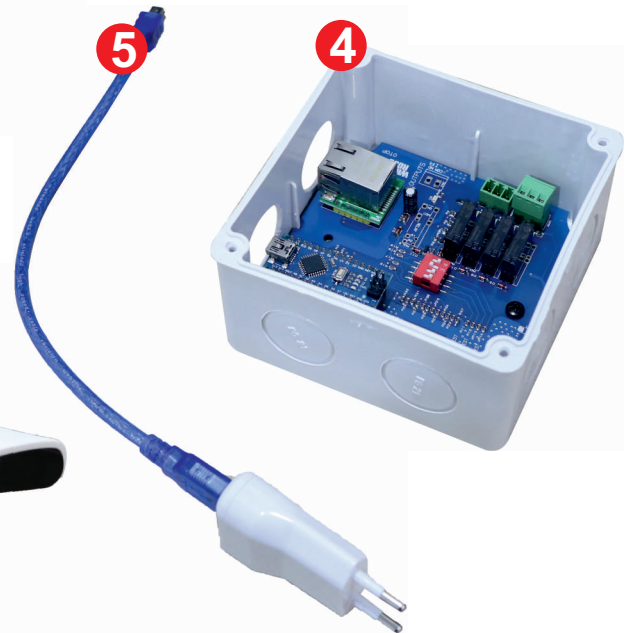
## Features of Plate Recognition System

- High Plate Recognition Rate (> 98%)
- Ability To Read Plates Of Different Structure (One, Two-Line Plates)
- Advanced Reporting
- Import Subscribers From Excel
- Adaptability To Different Light Environments (Tay And Night)
- Live Control Of Up To 6 Cameras In The Same Interface
- Accurately And Quickly Identify The License Plate Of Vehicles
- Ability To Store Photos And Detailed Information Of Vehicles Entering
- Easy Subscriber Operations With User Friendly Software
- Create Different Subscriber Groups For Each Entry Point
- Control With Blacklist
- Compatibility With Different Brand Ip Cameras
- Unlimited Authorization
- Doesn't Need External Trigger Like Loop, Photocell
- Recognition Of Different Country Plates (78 Countries)
- Ease Of Installation
- Define Vehicle Quota (per Subscriber) (Optional)
- Pricing Module (Optional)



### SET CONTENT

- |   |                      |
|---|----------------------|
| 1 | PTS Software         |
| 2 | PTS Camera           |
| 3 | Camera Pole          |
| 4 | Network Trigger Card |
| 5 | Power Adapter        |



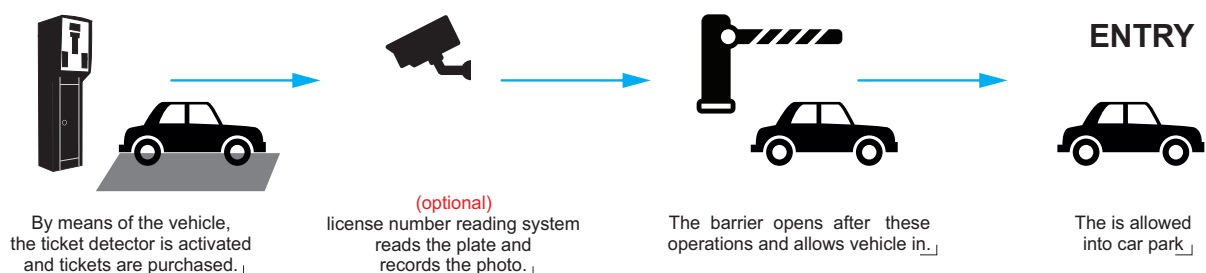
# TICKET PARKING SYSTEM



White Rose Ticket Parking System (TPS) is a pass control system designed for paid parking lots, which allows the usage fee to be calculated automatically with the ticket issued by the system.

The ticket machine placed at the entrance of the parking lot is activated when a vehicle is in its proximity. By pressing the ticket button, the driver receives his ticket which has barcode and entry information. If the vehicle enters the parking lot, the ticket number is recorded into the system. The ticket is read by the operator with the barcode reader when vehicle is leaving the parking lot, fee is calculated automatically by the system.

The card reader on the ticket machine can also be used as for subscription based access control.







## Features of Ticket Parking System

- Large Lcd Display
- Ticket Issuance Rate <2sec
- Ethernet Connection
- Ease Of Tariff Editing
- Ability To Use Different Sizes Of Tickets
- Ability To Write Detailed Tickets (Barcode, Business Name, Date And Time Etc.)
- Define Subscriber
- Direct Entry-exit With Subscriber Card
- Receipt Writing
- Detailed Reporting
- Record-keeping (Entry-Exit Time)
- Activation Only With Vehicle in Front
- Maximum 1 Ticket Per Vehicle
- License Plate Writing (Optional)
- Intercom (Optional)
- Cash Register Pos Integration (Optional)

### SET CONTENT

1	Ticketing Machine
2	Pricing Software
3	Barcode reader
4	Receipt Printer
5	Ticket Reading Machine (Optional)



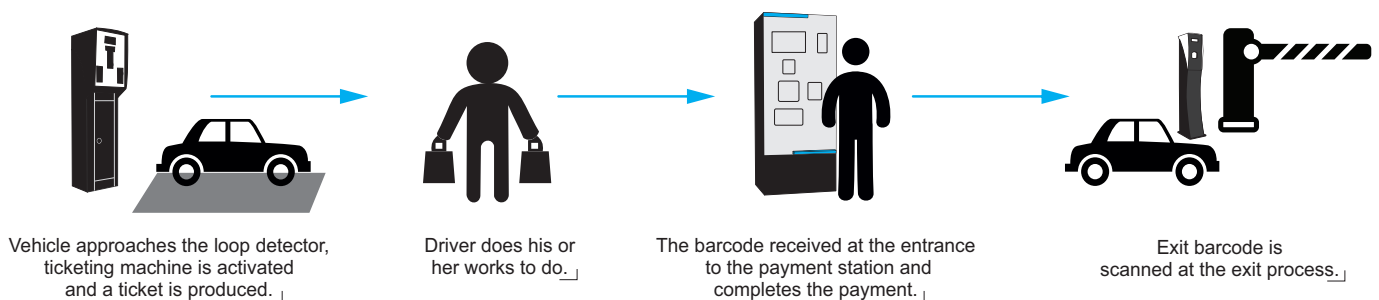
7

# AUTOMATIC PAYMENT SYSTEM



The White Rose Automatic Payment System (APS) has been developed to enable the user to pay the parking fee by himself. Thus, possible queues at the access points are prevented.

The user can view the vehicle information, entry and exit time, as well as the fee he has to pay, by swiping his ticket into the system or entering his license plate. After completing payment processes, user could leave the parking lot. The exit control can be performed by ticket reading device placed at exit point and / or by the plate recognition system.





## Features of Ticketed Parking System

- User-Friendly Interface
- Touch Screen
- Reading Barcoded Tickets
- Process With Plate
- RFID Card Reader
- Ability To Pay With Paper Money
- Ability To Pay With Coins
- Able To Give Money
- Receipt Printing
- Credit Card Integration (Optional)
- Cash Register Integration (Optional)





# PARKING GUIDANCE SYSTEM



White Rose Parking Guidance System (PGS) has been developed in order to enable drivers to find empty parking spaces quickly and efficiently. The system prevents the waste of time and fuel by directing the drivers to the empty parking spaces by means of information displays and LED indicators.

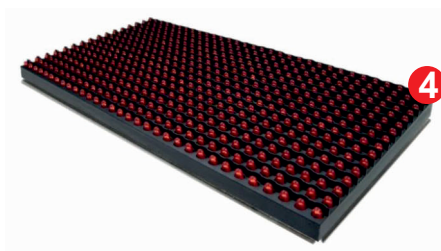
The parking spaces in the parking lot are monitored by the sensor module and the occupancy status is indicated via LED indicators. The system reports unoccupied space with green, occupied space with red and disabled parking space with blue indicator. Drivers can follow these indicators to reach the appropriate parking area without having to drive around the parking lot.

The system software determines the number of vehicles and empty parking spaces in the parking lot and informs the drivers with the information displays. Drivers are directed to empty parking spaces with these displays, accompanied with LED indicators.

Operating Voltage	5V
Power Consumption	0.5W
Detection Method	Ultrasonic
Detection Distance	4mt
Detection Range	±15°
Operating Temperature	-10°C ~ +55 °C
Communication Interface	RS485 + Ethernet
Address Encoding	DIPSW
Size	60*60*100mm
Weight	300gr



# Features of Parking Guidance System



- Different Led Indicator Colors (Red, Green, Blue)
- Information Displays
- Integrated Module (Led Indicator With Sensor in One Module)
- Detection Range Up To 4 Meters
- Control Module That Can Communicate Up To 32 Devices
- Communication Via a Single Cable Line
- Advanced Reporting
- Real-Time Display Of Parking Occupancy Information
- Blue Led Indicator For Disabled Parking Space

## SET CONTENT

- |   |                              |
|---|------------------------------|
| 1 | Sensor and Indicator Module  |
| 2 | Control card                 |
| 3 | Power source                 |
| 4 | Counter Indicator            |
| 5 | Management Software          |
| 6 | Server Computer              |
| 7 | Network Switch               |
| 8 | Main Input Indicator Display |



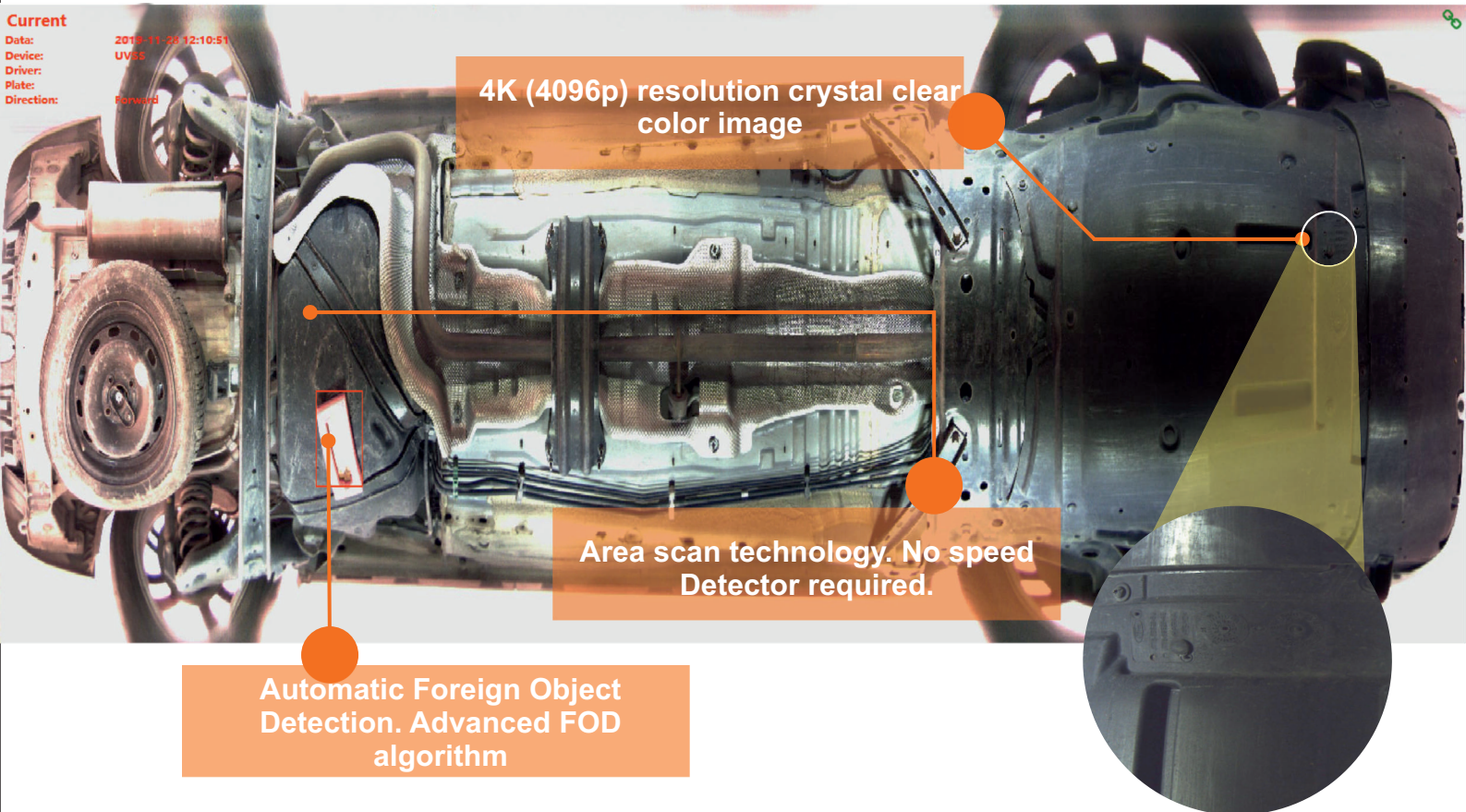
In this way, the driver is directed to the parking spaces at the car park entrance, and in the empty parking spaces.



The system software detects number of vehicles in the car park and number of empty car parks in the car park floors and informs the driver of the number of free spaces with LED dashboards



# UNDER-VEHICLE SCANNING SYSTEM



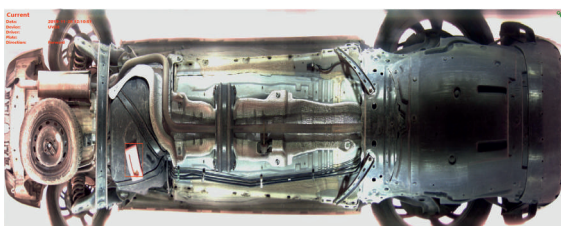
The White Rose Under Vehicle Imaging System (UVSS) is designed to control vehicles that will reach areas that require high security. The system is ideal for government, military, customs, hotels and shopping centers.

At the heart of the system, the Under Vehicle Scanning System performs real-time image analysis by scanning under the vehicle for the detection of illegal goods such as explosives, suspicious objects, drugs and guns. The system uses a state-of-the-art intelligent area scanning camera for image analysis.



Linear Scan

**VS**



Area Scan



## Features of Under - Vehicle Surveillance System

- Fixed Installation •
- Area Scan •
- Capable Of Capturing Images Up To 60km / H •
- High Resolution Image Capture (4096p) •
- Unlimited Scan Length •
- Cost Effective (Thanks To Integrated Camera) •
- Ability To Work in Harsh Weather And •
- Environmental Conditions •
- Smart Camera With Image Compression •
- Face Recognition System Integration (Optional) •



### SET CONTENT

- 1 UVSS
- 2 ANPR Camera
- 3 Management Software
- 4 Face Recognition Camera (Optional)
- 5 Signalization Light

## Specifications

### Performance

Capture Accuracy	> 99.9%
Speed Limit	0 ~ 60km/h
Intelligent Analysis	Auto
Height of Vehicle Chassis	50 ~ 3000mm
Width of Vehicle Chassis	≤ 4500mm
Length of Vehicle Chassis	No limit
Imaging Time	< 1s
System Extension	NPR & Face Recognition
Foreign Object Detection	Optional
Load Bearing Capacity	60 Tonnes

### Camera

Sensor Resolution	4K (4096P)
Image Resolution	≥ 10000 x 4096
View Angle of Lens	> 170°
White Balance	Auto
Exposure	Auto

### Network

Speed	Gigabit Ethernet
Protocol	IPv4

### Electrical

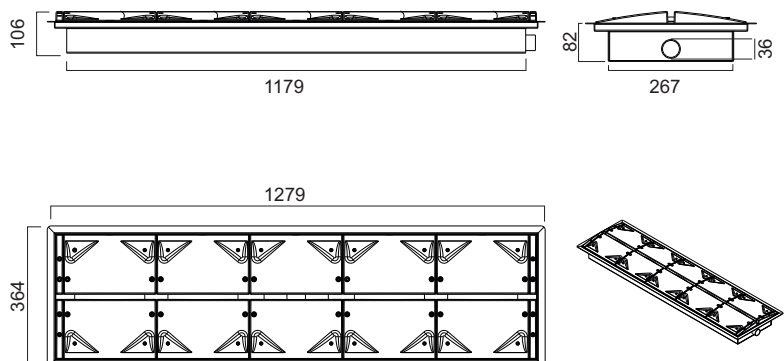
Power Supply	DC24V/150W
--------------	------------

### Constructions

Dimensions	1179mm x 364mm x 82mm
Weight	70kg

### Environment

Operating Temperature	-40 °C ~ +70 °C
Protection level	IP68



# AUTOMATIC ACCESS SYSTEM



White Rose Automatic Access System (AAS) is a modern access control system developed to allow user access without waiting.

The system uses RFID UHF technology for access control. The Automatic Access System consists of the AAS tag (windscreen type, adhesive) fixed to the windscreen of the vehicles to be passed and the appropriately positioned label reader.

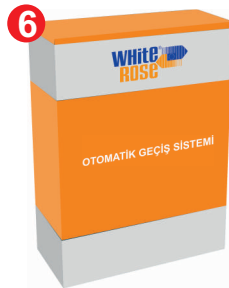
The barrier control is automatically performed by reading the AAS tag placed on the vehicle. The greatest advantage of the system is that it allows access without waiting, since there is no need for any additional operation for access control.

Reading Distance	Depending on the tag 5 -15 m UHF
Protocol	ISO18000-6B, ISO18000-6C EPC GEN2
Frequency	860 - 1030 MHz European standard
RF Output Power	0-30dBm Software adjustable
Communication	RS232, RS485, Wiegand26/34
Internal Antenna	yield 12dbi
Feeding	12V DC, Current consumption less than 3A
Operating temperature	- 20 °C / +70 °C



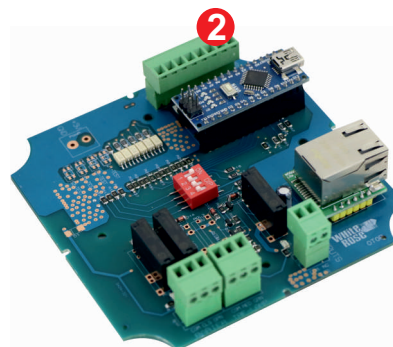
## Features of Automatic Access System

- Ease Of Integration (Can be Integrated Into Existing Systems Without Additional Apparatus)
- Easy And Fast Passage (No Control Device Or Additional Operation Required)
- Work in All Weather Conditions (Not Affected By Weather Conditions Such As Snow, Rain, Wind Etc.)
- Control With Pc Software
- Import Subscribers From Excel
- Ability To Define Different Access Permissions For Each Access Point
- Track Subscriber Access
- Advanced Reporting (Optional)



### SET CONTENT

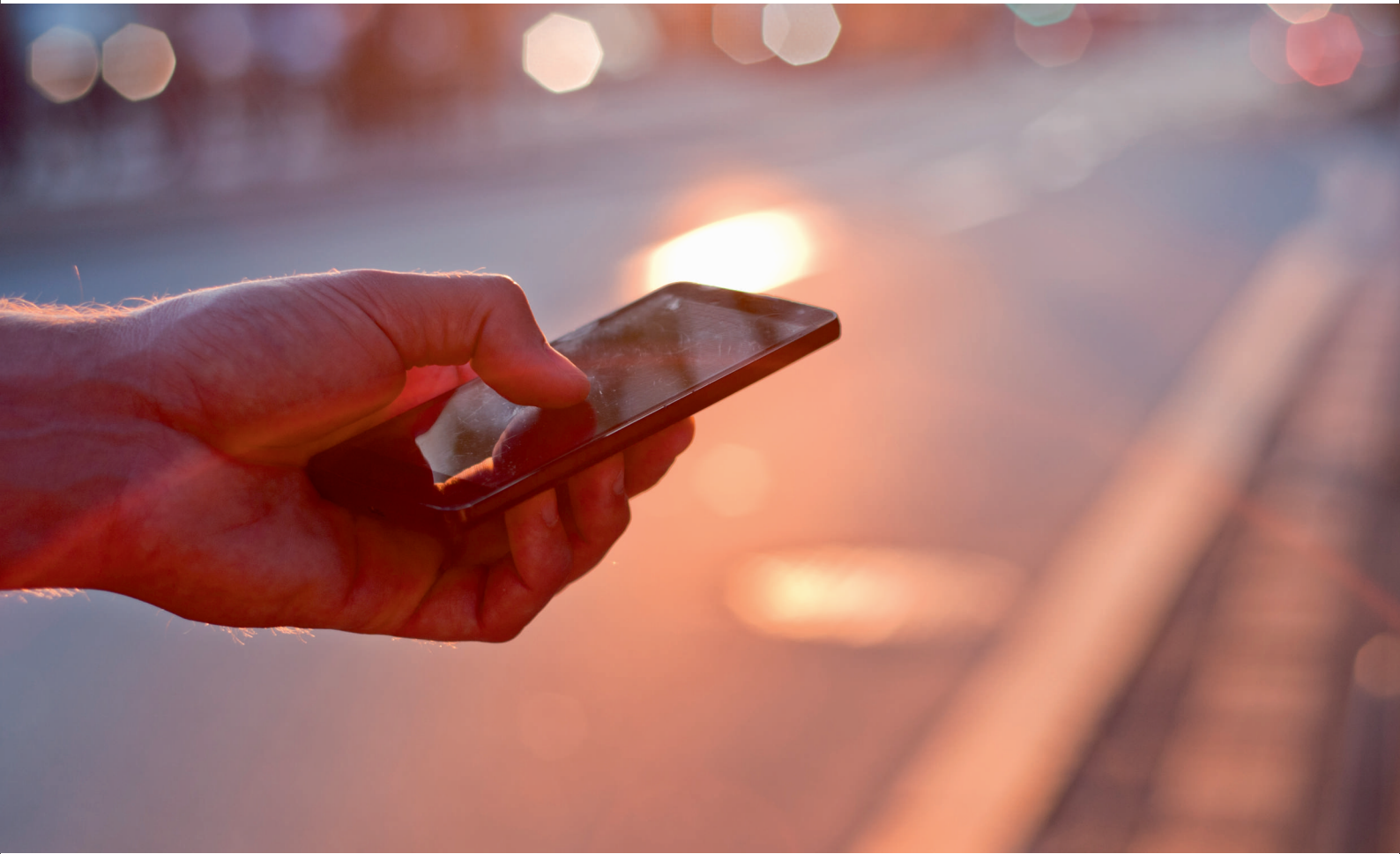
- |   | SET CONTENT            |
|---|------------------------|
| 1 | RFiD Antenna           |
| 2 | Control card           |
| 3 | Antenna Mast           |
| 4 | RFiD Tag               |
| 5 | Power Adapter          |
| 6 | PC Software (optional) |



[www.whiterose.com.tr](http://www.whiterose.com.tr)

26179

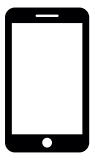
# GSM MODULE



GSM Module is an access control system developed to allow authorized users to control barrier by call, SMS or mobile application.

Users are added to the system by the system administrator and are authorized to control the barrier or garage door. Authorized users can control the garage door or barrier from any location by calling the module or by sending SMS to the module.

Unlike the wireless controller, the GSM Module is not affected by the distance. The distance of the user to the barrier is not important in the GSM module.



call or send sms to the barrier that should be opened.



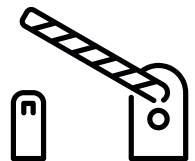
communication is established between barrier and phone via gsm module.



vehicle waits for barrier to be opened.



sms sent from phone is delivered to the barrier

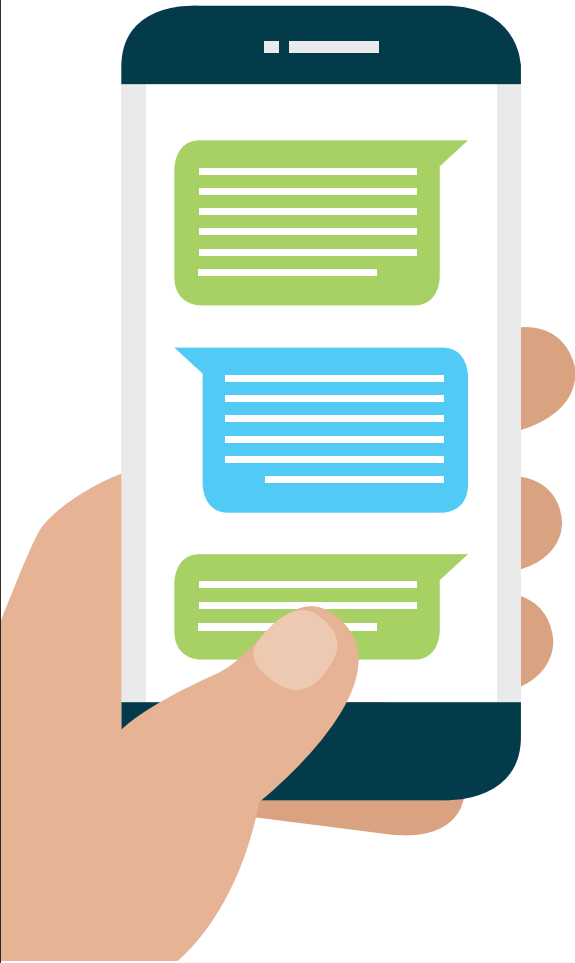


once barrier receives call or sms, it allows passage to vehicle.



## Features of GSM Module System

- Barrier With Call •
- Open Barrier With Sms •
- Open A Barrier With Mobile Application •
- Ability To Add Users Via Sms •
- 500 User Memories (Depending On Sim Memory) •
- Ease Of Installation •
- Ease Of Use •
- Connection To All Kinds of Doors (With Relay Output) •



### SET CONTENT

- |   |               |
|---|---------------|
| 1 | Power Adapter |
| 2 | Control Card  |





Type	DN 3SR DC	DN 4 DC	DN 6 DC
Maximum arm length	2mt	4mt	5,8mt
Protection rating	IP54		
Power supply	230 V 50/60 Hz		
Motor voltage	24 V		
Control unit	H-TECH 70		
Average current	2 A		
Maximum power	120 W		
Opening time	1,5sn	4,5sn	
Maximum torque	95 Nm	286 Nm	
Continuously of operation	100%		
Limit switch type	Electromechanical		
Impact reaction	Current control regulator		
Slow down	Available		
Manual use	Switch on Reductor		
Working temperature	-20°C min +70°C max		
Battery support	Optional		
Safety system	Wireless Safety Photocell		
Barrier weight	42 Kg	42 Kg	42 Kg

## DYNAMIC AUTOMATIC BARRIER

DYNAMIC Barrier, which becomes more functional with its brand new structure and convenient control system, offers many advantages to the user. It prevents unauthorized use and ensures that the parking area is effectively controlled. It also provides visual indication of the barrier position thanks to its LED indicator.



## PARS AUTOMATIC BARRIER

The aesthetic appearance of the PARS automatic barrier with its rounded outline is resistant to oxidation and corrosion thanks to its aluminum body. Microprocessor based control panel is compatible with all kinds of access control systems. It can provide 100% working continuity with its 24V DC motor and can operate without any problems even with intensive use.

Type	PL 3SR DC	PL 4 DC
Maximum arm length	2mt	4mt
Protection rating	IP54	
Power supply	230 V 50/60 Hz	
Motor voltage	24 V	
Control unit	H-TECH 70	
Average current	2 A	
Maximum power	120 W	
Opening time	1,5sn	4,5sn
Maximum torque	95 Nm	286 Nm
Continuously of operation	100%	
Limit switch type	Electromechanical	
Impact reaction	Current control regulator	
Slow down	Available	
Manual use	With personal key	
Working temperature	-20°C min +70°C max	
Battery support	Optional	
Safety system	Wireless Safety Photocell	
Barrier weight	40 Kg	40 Kg



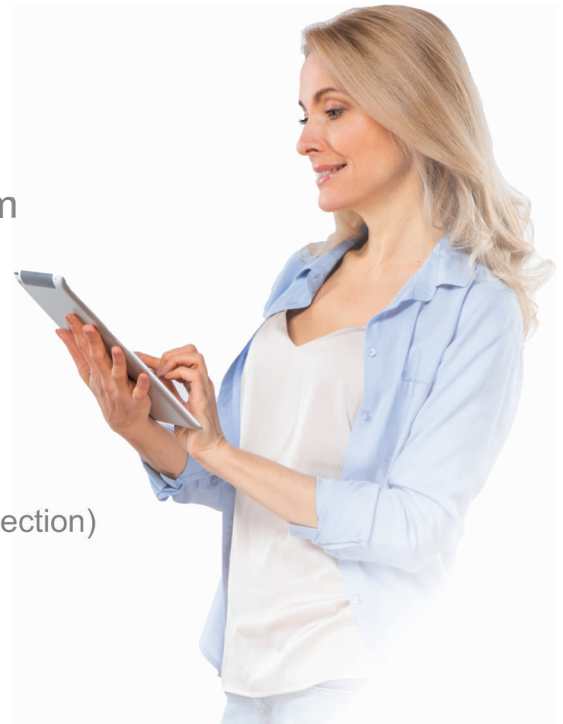


# SMART BARRIER



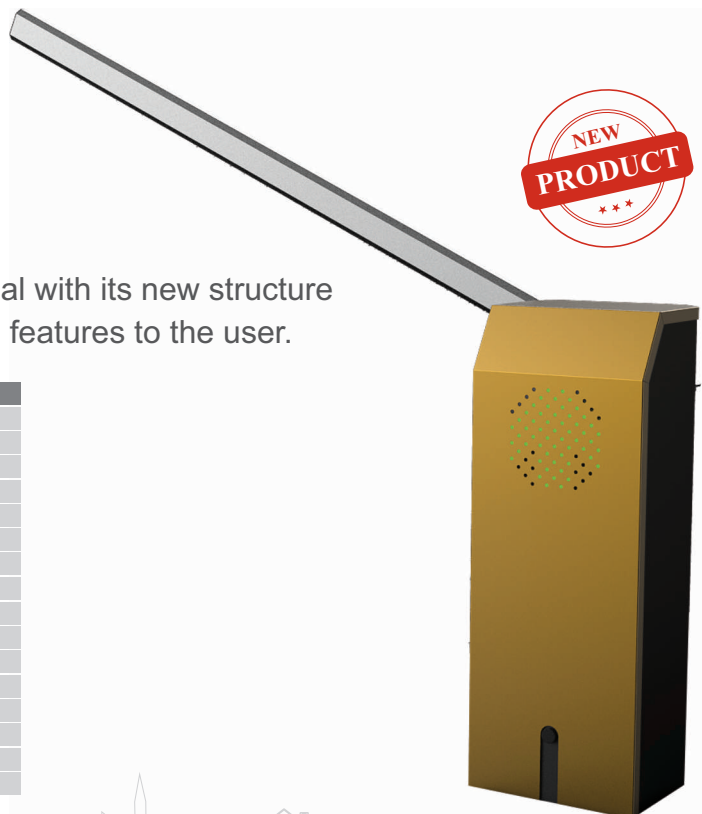
## Features of Smart Barrier System

- Quick Opening (<4sec)
- Safety Photocell
- Warning Light
- Under Arm LED Indicator
- Digital Switch Setting
- Control Via PC Software (USB, Ethernet Connection)
- Adjustable With Tablet (OTG Cable Connection)



# PRESTO BARRIER

PRESTO Barrier, which becomes more functional with its new structure and practical control system, offers many useful features to the user.



Type	PRESTO				
Maximum arm length	2mt	3mt	4mt	5mt	6mt
Protection rating	IP54				
Power supply	230 V 50/60 Hz				
Motor voltage	380V				
Control unit	PLC + INVERTER				
Average current	2 A				
Maximum power	370 W				
Opening time	1,5sn				
Continuously of operation	100%				
Limit switch type	Optical Sensor				
Impact reaction	Current control regulator				
Slow down	Available				
Manual use	With personal key				
Working temperature	-20°C min +70°C max				
Safety system	Wireless Safety Photocell				
Barrier weight	40 Kg				

**Warning :** Some of the information in this brochure may not be correct due to changes in product specifications that may occur after printing. Some equipment described or displayed may be available at an additional cost. Before ordering, please contact your White Rose dealer for the most updated information. The manufacturer reserves the right to make changes to the prices, colors, materials, specifications and models at any time and without prior notice.

WWW.WHITEROSE.COM.TR

# CAR PARK & PASS CONTROL SOLUTIONS

*PLATE  
RECOGNITION  
SYSTEM*



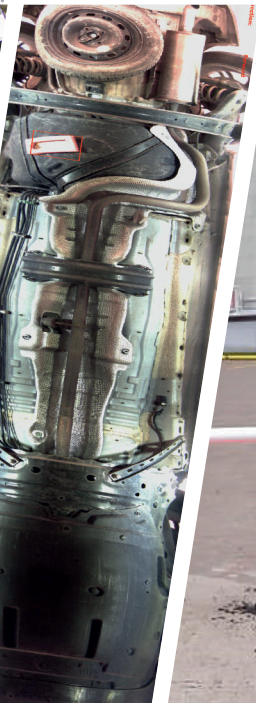
*TICKET  
PARKING  
SYSTEM*



*AUTOMATIC  
PAYMENT  
SYSTEM*



*PARKING  
GUIDANCE  
SYSTEM*



*UNDER-VEHICLE  
SCANNING  
SYSTEM*



*AUTOMATIC  
ACCESS  
SYSTEM*

