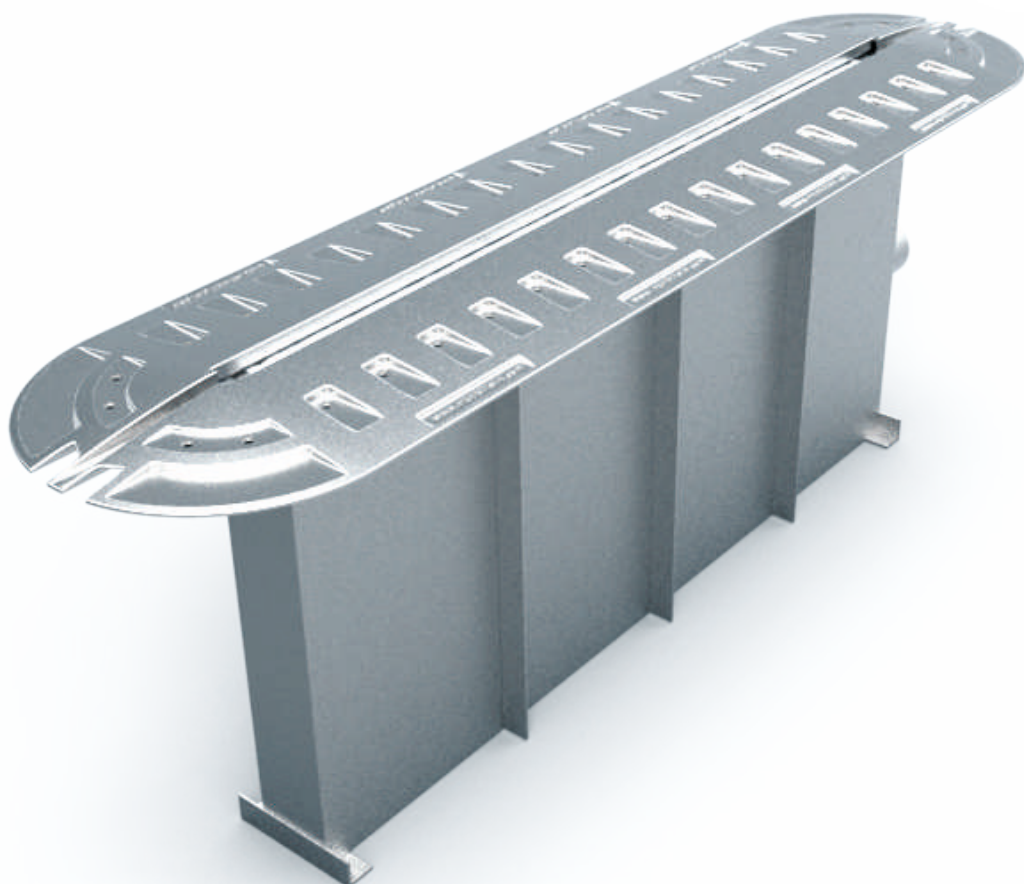


ACCESS CONTROL SYSTEMS

everything under control





FOR COMFORT AND SAFETY OF ANYTHING YOU CARE IN YOUR LIFE



We always ask ourselves this question: How can we provide both comfort and safety at the same time? Yes, in fact, comfort and safety are two conflicting words... But we ourselves create miracles with these two words... just with some knowledge, intelligence and ability... which are our key words en route to serve humanity. With these key words, we fit comfort and safety into a frame and here emerges White Rose. We, as White Rose, questioning continuously, have rendered our products suitable for people, not the other way around.

What are their needs, how can we assist them in their daily life? First, we discussed all these questions with our professional team and then we could answer them observing the needs of our people.

Thus, under three titles, we made use of our cutting-edge technology for humans comfort and safety. With our Industrial Automation, Urban Automation and Home Automation products we obtained answers of our questions and so we became an unrivaled company in Turkey, ranking among leading companies in the World. Thanks for deciding to get familiar with advanced technology we offer.

YOU DESERVE THE COMFORT OF TECHNOLOGY



WHAT ARE ACCESS CONTROL SYSTEMS?

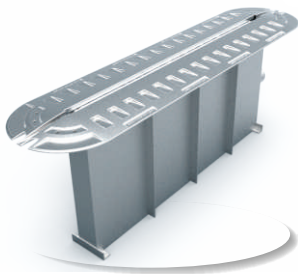
They are full technology systems which make life easier, provide required security and comfort as well. With Under Vehicle Scan System, RFID system and Railwalk (railway scanner), access control systems are produced to give you the control. Access control systems make you save time. They make your works much easier in peak times of the day. Offering safety together with comfort, this artful systems will change your life style.

ACCESS CONTROL SYSTEMS MAKE YOU FEEL AT HOME

Everybody wants to be in peace in prime times of his/her life. But this peace should have a start. We, with you, would like to have a start that brings convenience, comfort and safety. Therefore, we produced Access Control Systems. Nothing will escape from notice while they provide you security. With Under Vehicle Scanning System, you have full control on vehicle and place security. RFID system makes you save time. Thanks to facilities offered by the system, any White Rose product in connection might easily adapt to your life. With Railwalk you may ensure security in railways, detect any deformed rail in time and thus prevent eventual accidents. Shortly, the smile in your face when you see favorable outcomes of Access Control Systems will be evidence of our success.

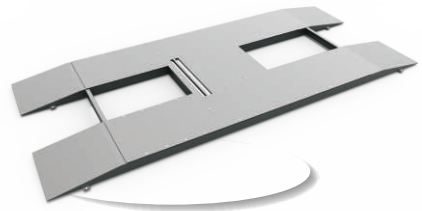


WHAT WE OFFER: TOP-LEVEL SAFETY



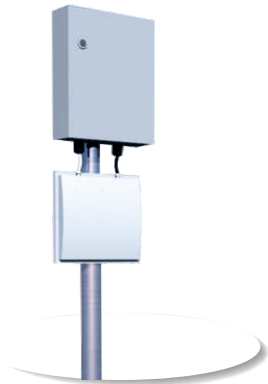
page 8

FIXED UNDER VEHICLE
SCANNING SYSTEM



page 12

MOBILE UNDER
VEHICLE SCANNING SYSTEM



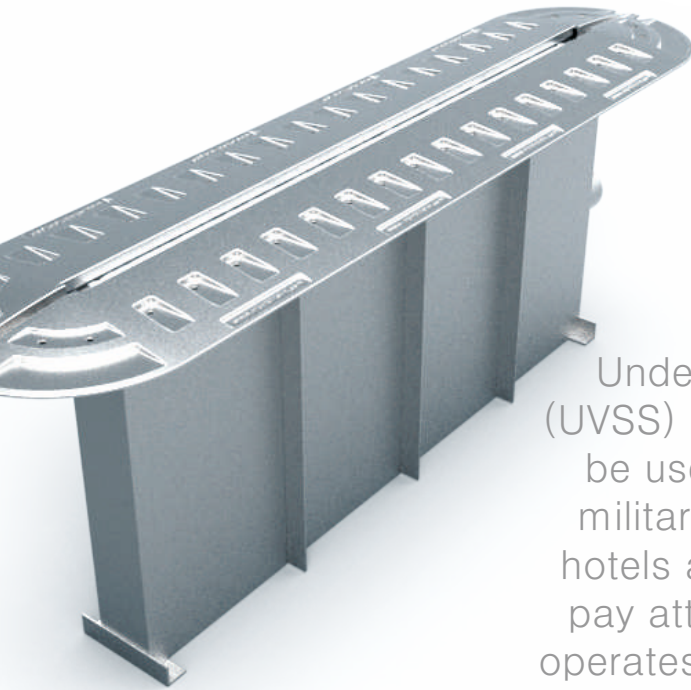
page 16

RFID SYSTEM



page 20

RAILWAK



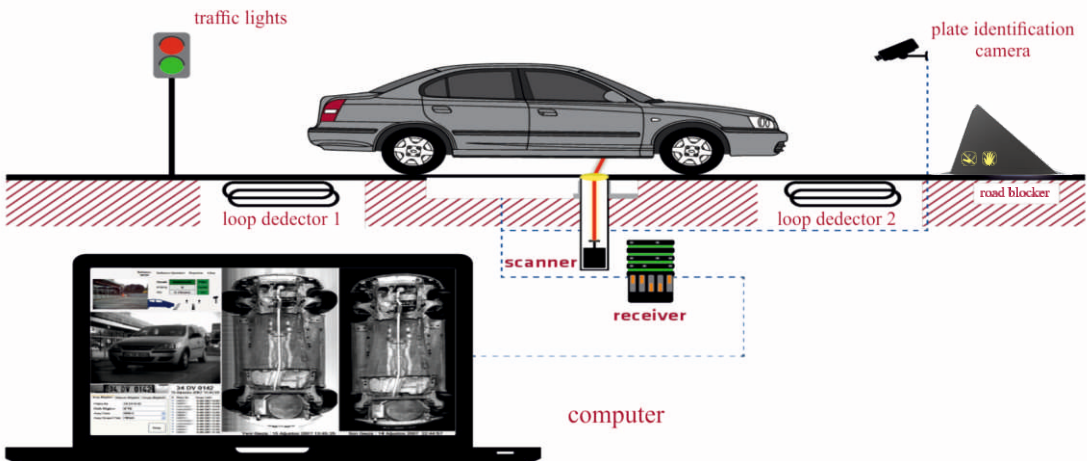
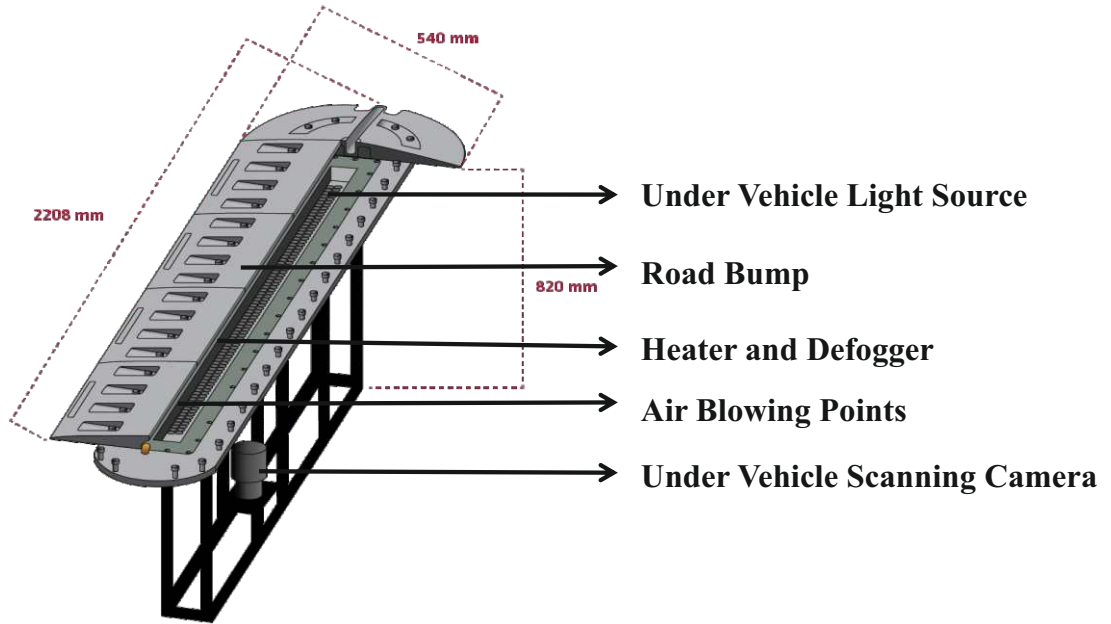
FIXED UNDER VEHICLE SCANNING SYSTEM

your eyes on the ground

Under Vehicle Surveillance System (UVSS) is a security system designed to be used at access control points of military buildings, public institutions, hotels and private organizations which pay attention to security. This system operates upon memorizing the details of the vehicle scanned from below and comparing them with the next scanning details to check if there is any difference and to unveil, eventually, anything hidden.



product details



FITS YOUR CITY VERY WELL

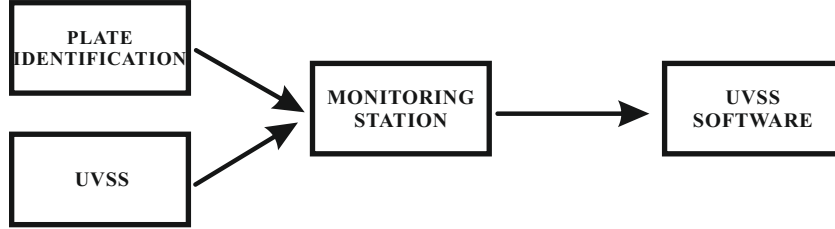
Reviewing all types of our Access Control Systems products helps you find solutions for all your needs. Therefore, we kindly invite you to visit our web site.

www.whiterose.com.tr



product details

SYSTEM STRUCTURE

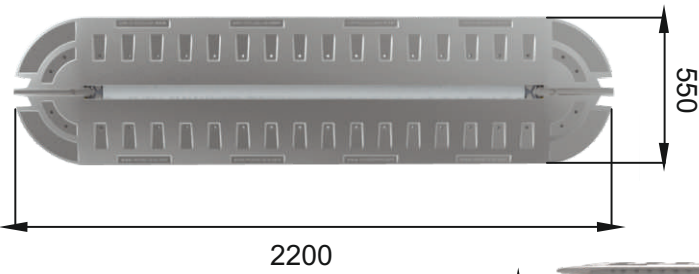


Contents of the Kit

- ▶ Fixed Chassis of the Under Vehicle Surveillance System
- ▶ Linescan Camera
- ▶ Under Vehicle Light Assembly
- ▶ Under Vehicle Resistance Assembly
- ▶ Liquid Level Detector
- ▶ Plate Identification System
- ▶ PC and 22" LCD Monitor
- ▶ Power Control Panel
- ▶ UPS 3 kva
- ▶ Entry Traffic Lamp with Pole
- ▶ System Software License

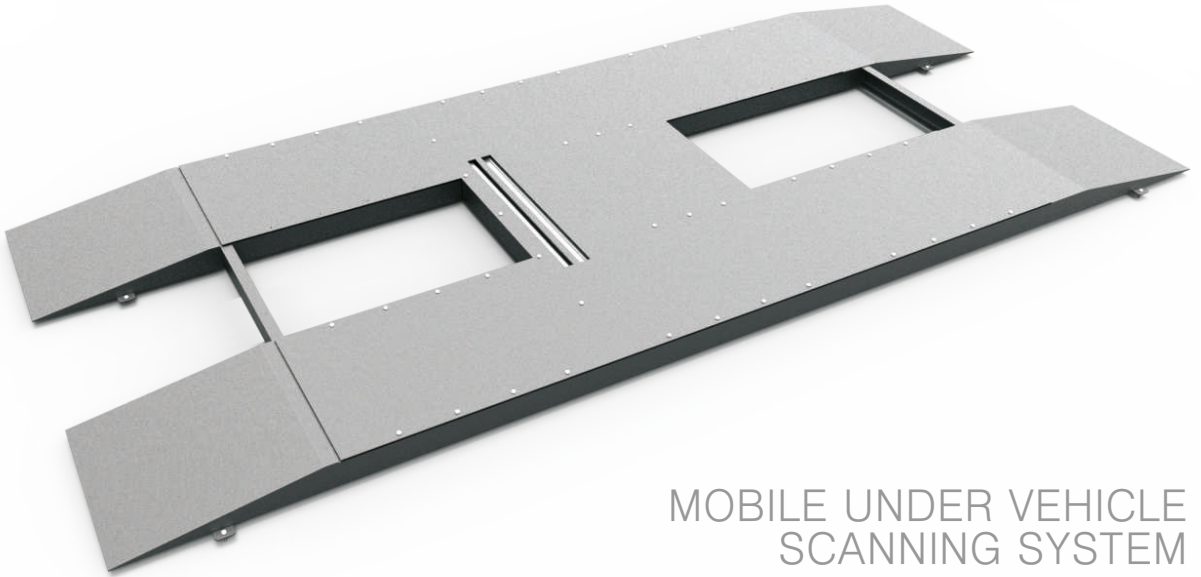
Optional Equipments

- ▶ Optional Air Cleaning System



DOESN'T TAKE
MUCH TO
SECURE YOU





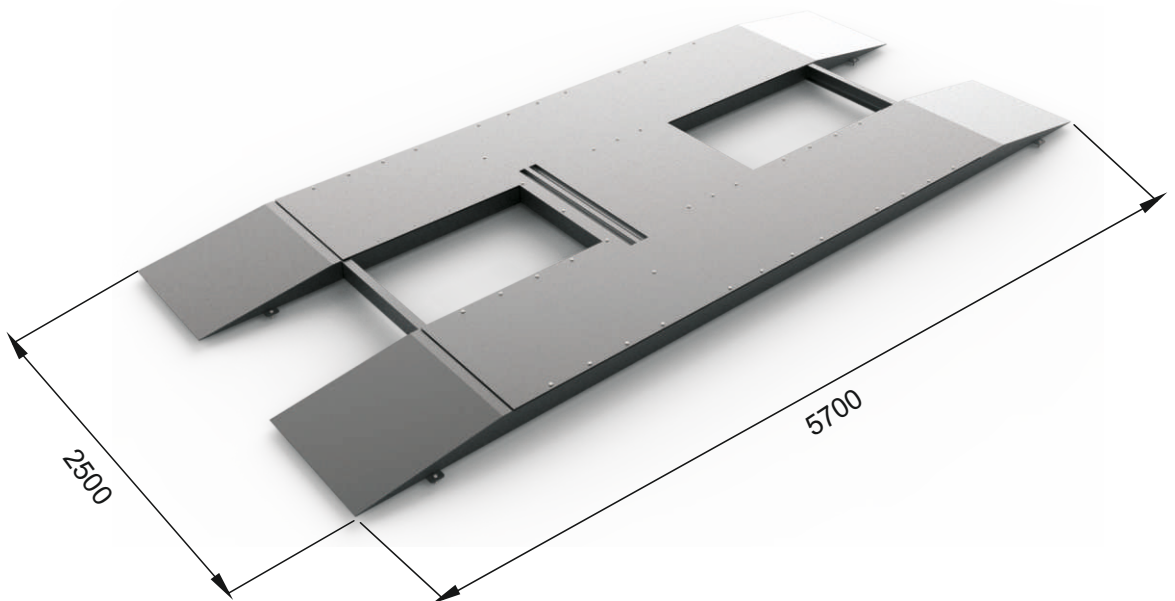
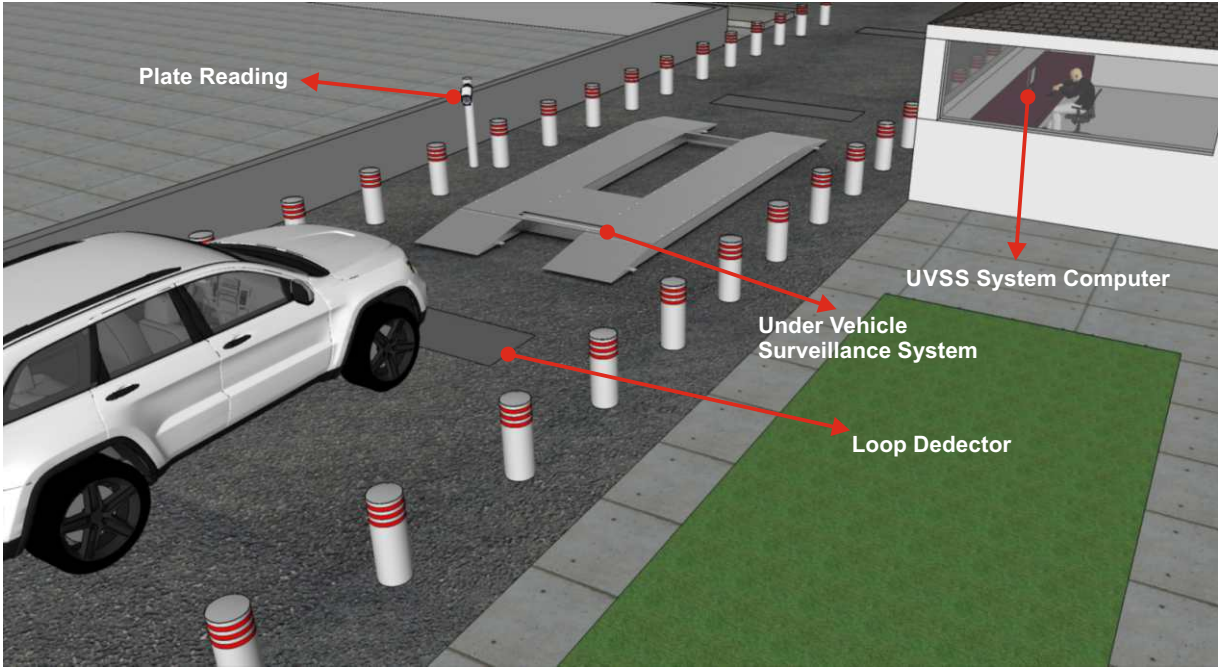
MOBILE UNDER VEHICLE SCANNING SYSTEM

easy solution

Like Fixed Under Vehicle Surveillance System (UVSS), Mobile Under Vehicle Surveillance System also operates upon memorizing the details of the vehicle scanned from below and comparing them with the next scanning details to check if there is any difference and to unveil, eventually, anything hidden. Where the ground is not suitable for digging, mobile system can be applied above ground to maintain your safety.



product details



UNDER VEHICLE SCANNING SYSTEM COMPONENTS

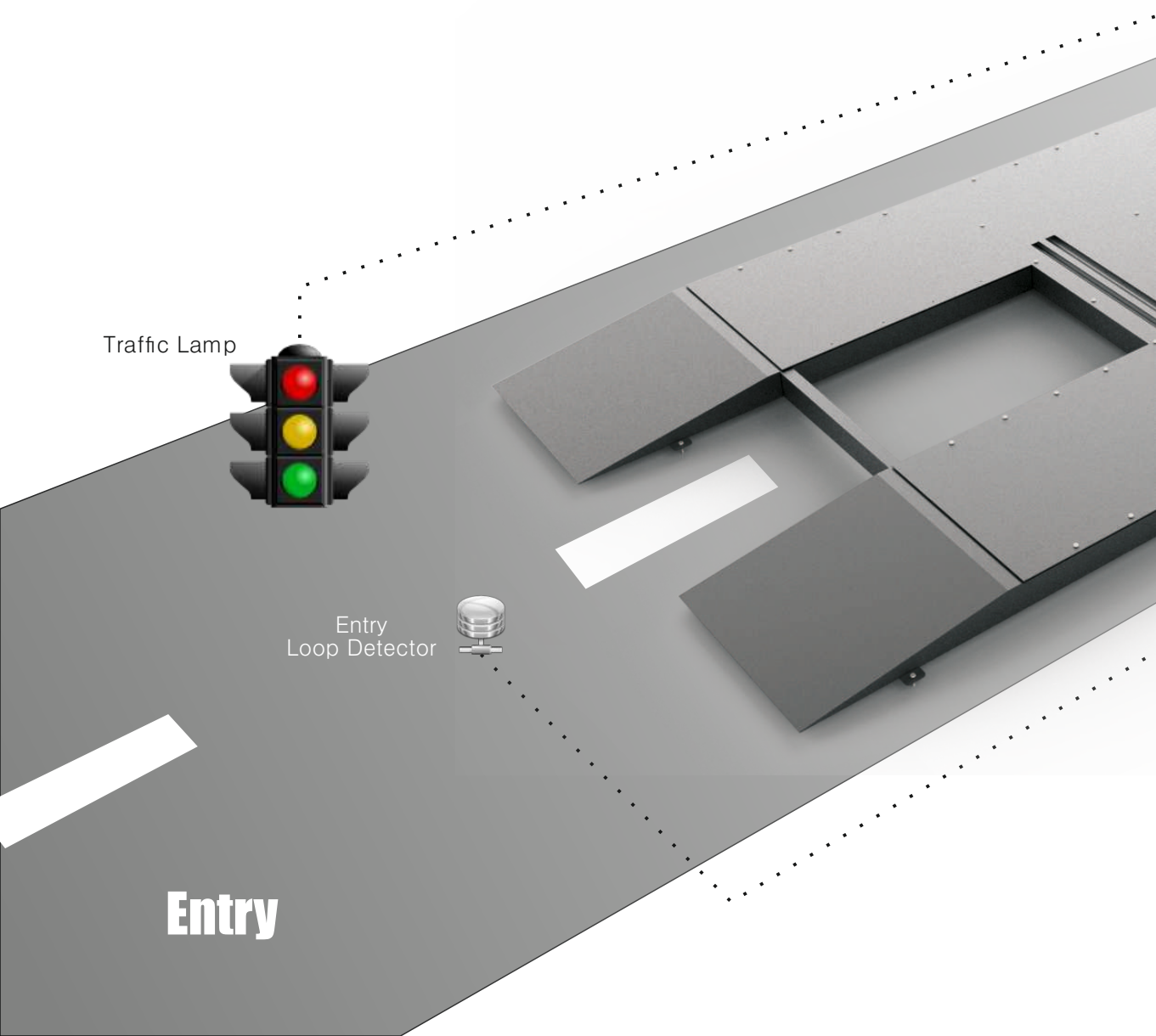
Traffic Lamp

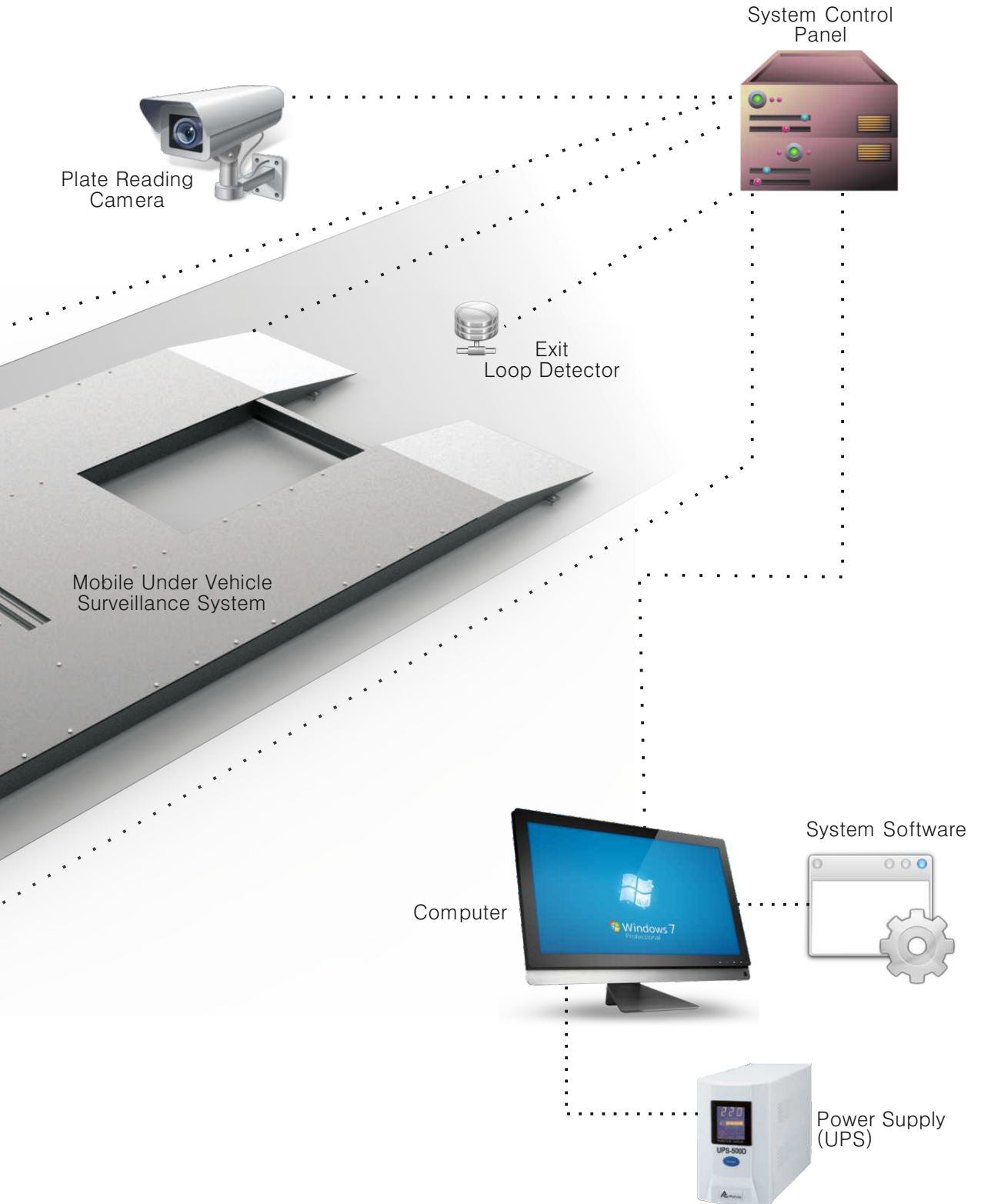


Entry
Loop Detector



Entry







RFID SYSTEM

smart access

It's a high security barrier control system developed for parking lots. Through the use of cards or tags placed on vehicles, it ensures a fast and safe vehicle access in parking lots. If approaching vehicle is authorized, barrier opens to provide an easy and safe passage.



product details

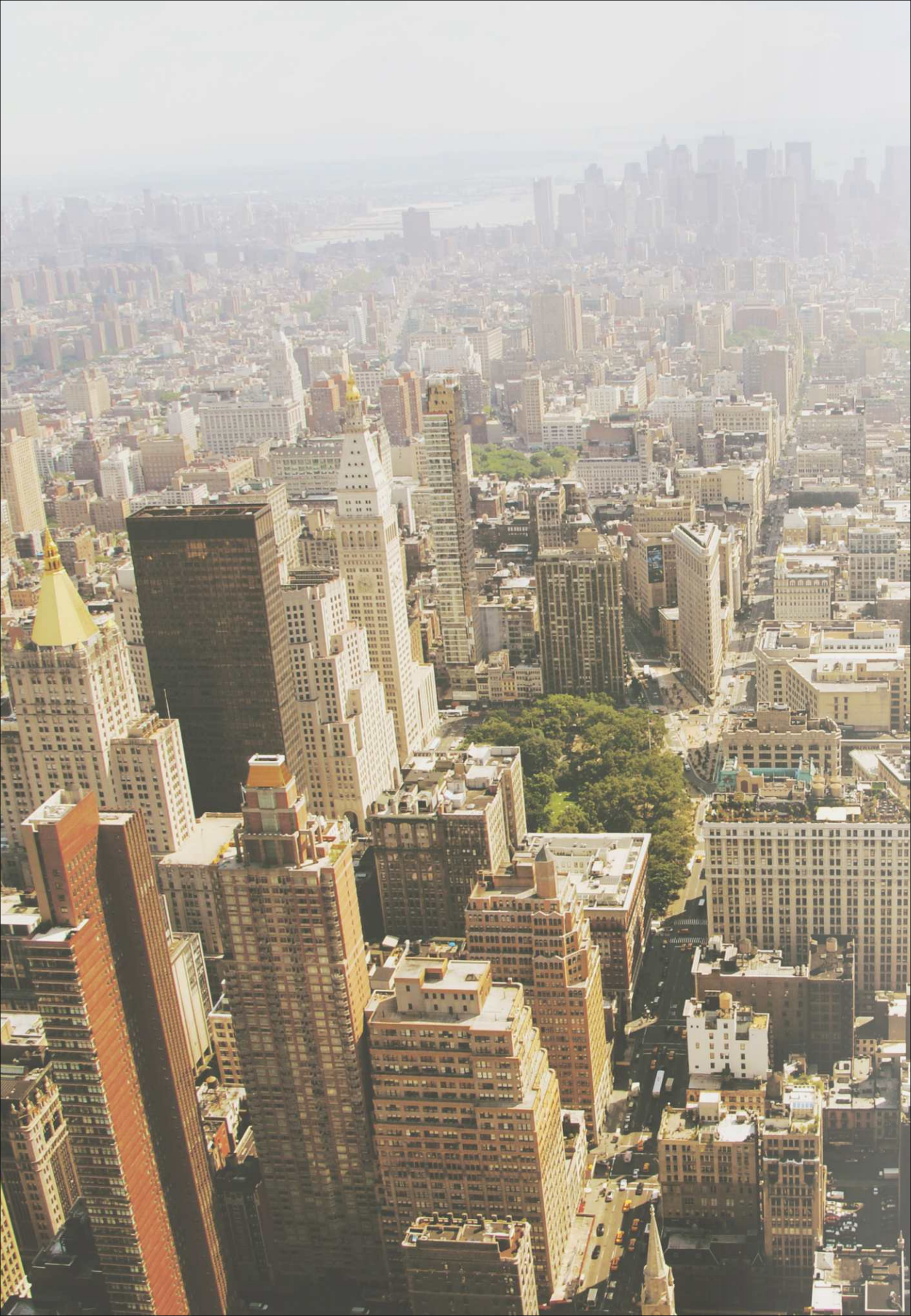
Important Specifications	
Support Protocol	ISO18000-6C EPC Gen2 / ISO18000-6B
Operating Frequency	ISM 902MHz ~ 928MHz, Or 920MHz ~ 925MHz
Customization	860MHz ~ 960MHz
Çalışma Modu	Operating Mode FHSS or mixed frequency hopping spread spectrum mode of operation defined by software
Transmit Power	20dBm ~ 30 dBm (defined by software)
Reading Writing performance	
Reading Speed	For a single card, reading time is less than 10ms for 64-bit.
Reading Distance	4m ~ 8m (depends on the tag and the environment)
Writing Speed	Less than 30ms for 8-bit
Writing Distance	2m ~ 4m (depends on the tag and the environment)
Read Message	Alarm bell
Data Point Interface	
RS232 Port	Available
RS485 Port	Available
Scaler Port	Weigand26/34
Trigger Port	Available
TCP/IP Port (RJ45)	Available
Elektrical Parameters	
Power Supply	DC+9V,4A
Power Consumption	6W
Outer Dimension and Weight	
Dimensions	235mm×235mm×50mm
Weight	1500g
Operating Ambient	
Operating Temperature	-20°C~70°C

FITS YOUR
CITY VERY WELL

Reviewing all types of our Access Control Systems products helps you find solutions for all your needs. Therefore, we kindly invite you to visit our web site.

www.whiterose.com.tr







**TOP LEVEL
COMFORT STANDART
IN INTENSIVE
LIVING
CONDITIONS**



RAILWALK
systems

RAILWALK
smart control

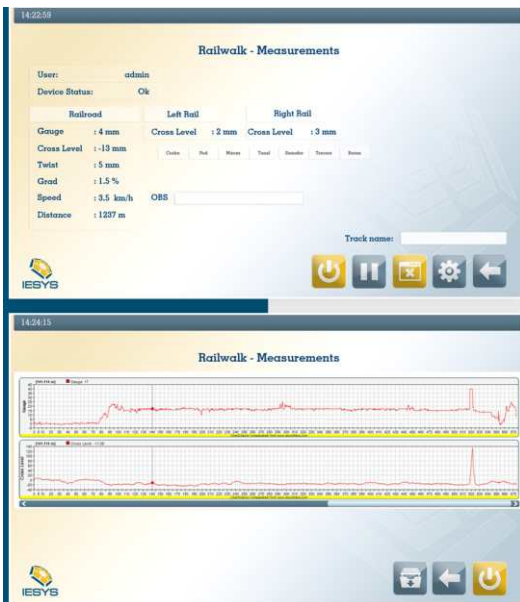
Railwalk is a railway controller product. This new technology product we offer detects any deformed rail in railways and thus prevents eventual accidents. With Railwalk, performing one hundred per cent safe controls will make you feel much serene.



product details

Railwalk is a light portable trolley that provides fast and accurate measurement of rail track geometry. The system is a powerful and reliable tool for efficient monitoring of track status in order to deliver increased safety and to perform efficient maintenance operations.

Railwalk records all measured data in electronic while the operator runs the trolley on the railway.



key features

- Multiple measurements in the same: gauge, vertical level, cross-level, twist, gradient, temperature.
- Numeric and graphical display for fast diagnosis.
- Light and portable.
- Easy to assembly.
- Battery operated.
- Detachable rugged tablet that can be used both on the trolley and office environment.

FITS YOUR CITY VERY WELL

Reviewing all types of our Access Control Systems products helps you find solutions for all your needs. Therefore, we kindly invite you to visit our web site.

www.whiterose.com.tr





Track measurement	<p>Gauge: 1435mm, -15mm... + 40mm, accuracy ± 0.5mm Vertical levels on each track: -200mm... +200mm, accuracy ± 1mm Cross-level: -200mm... +200mm, accuracy ± 1mm Twist: -200mm... +200mm, accuracy ± 1mm Gradient: ‰ Position accuracy: 10mm Speed: 0-10km/h, accuracy ± 0.5km/h Outdoor temperature: -25... +50°C, accuracy ± 5.5°C</p>
Maximum operating speed	10 km/h
Interconnectivity	USB, WLAN interfaces
Visualization and operation	<p>rugged sunlight readable 7" touchscreen display MIL-STD 810G certified Detachable from the trolley for remote data analysis</p>
Software interface	<p>Microsoft Windows based software application Real-time display of measurements in numerical format Graphical display for measurements data analysis Manually registering of track POI's Export of measured data in ".csv" format Automatically generated "Defects Report" Light aluminium structure</p>
Assembly	<p>Light aluminium structure Assembly made in less than 2 minutes from 3 main parts</p>
Environmental protection	IP65
Power supply	<p>Runs on rechargeable batteries Operating lifetime: 6 hours</p>
Weight	9 kg
Operating temperature	-25...50°C
Operating humidity	5...95% non-condensing
Optional	<p>Track 3D profiling Track temperature measurement Tunnel measurement Video snapshots GPS tracking Additional battery pack</p>



ACCESS CONTROL SYSTEMS
KEEP YOUR WORK SAFE

Please Note: This brochure may contain typological errors or inaccuracies due to further modifications in product features. Some equipment illustrated or described here at the moment may be available at an additional fee. Before placing an order please get in touch with your authorized White dealer to provide you with the latest information. The manufacturer reserves the right to make changes to prices, colors, materials, specifications and models at any time, without notice.

WWW.WHITEROSE.COM.TR



Please read
for the product



ACCESS CONTROL SYSTEMS